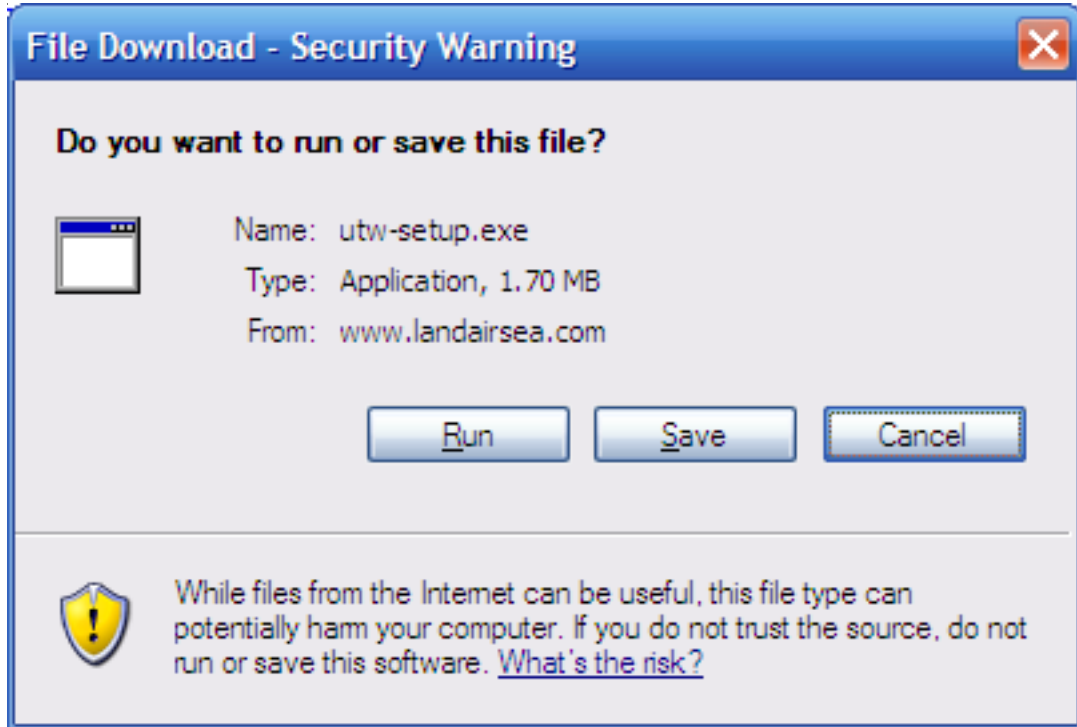


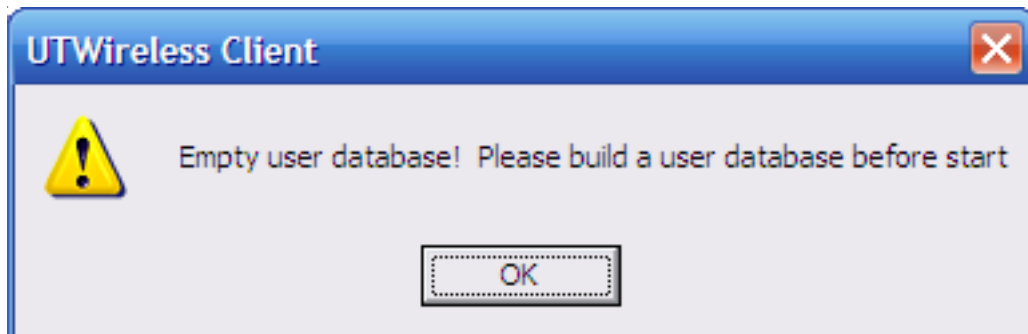
Section 2 - Downloading, Installing and Running Universal Tracking Wireless (UTW / UTWireless) for the first time

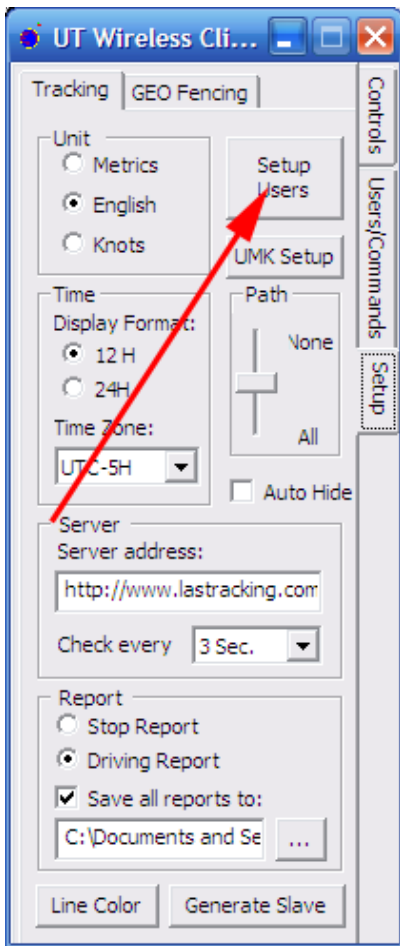
If you have not already done so, go to the LandAirSea website: www.landairsea.com and download the LandAirSea 8100 UTW software. You can find the link by going to the bottom of the home page, clicking on Support/Downloads and then clicking on the LandAirSea 8100 UTW Software link. Click Run.



Now just follow the instructions during the software setup process. After the setup process has completed, you will see an icon on your desktop called UTWireless Client. Double click on the icon to run the program.

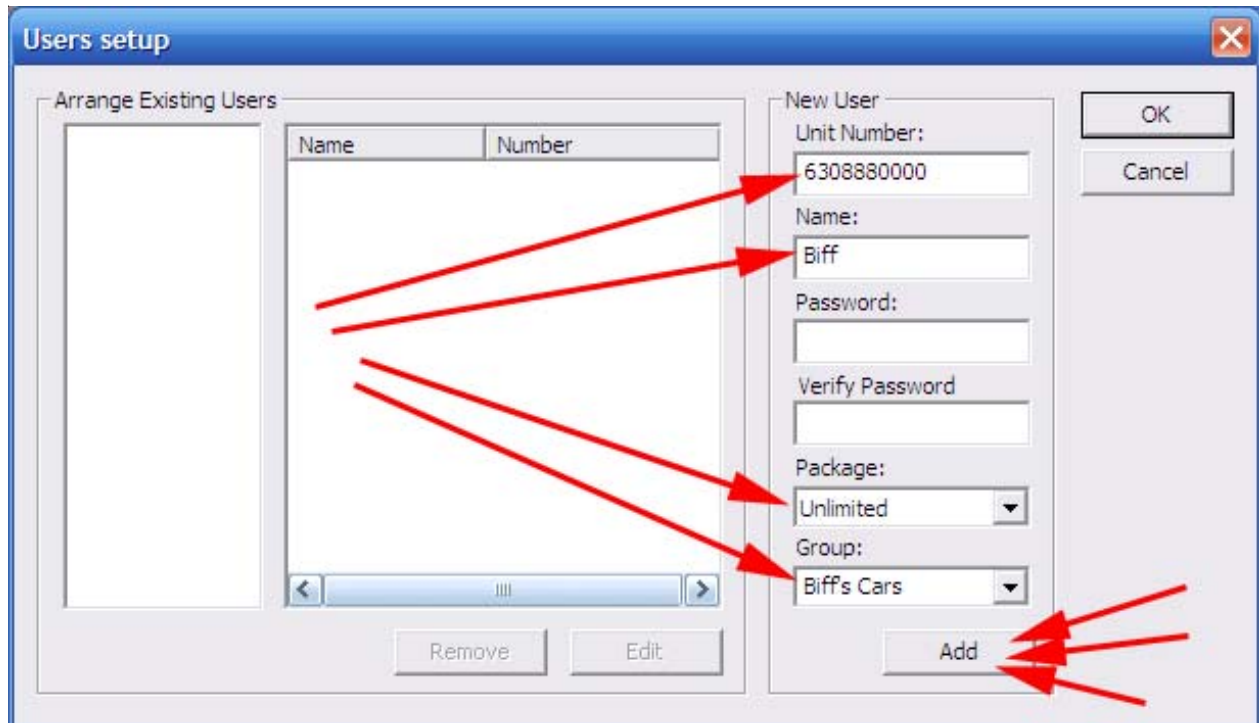
The first message you will see is shown below. This is normal. Click Ok.



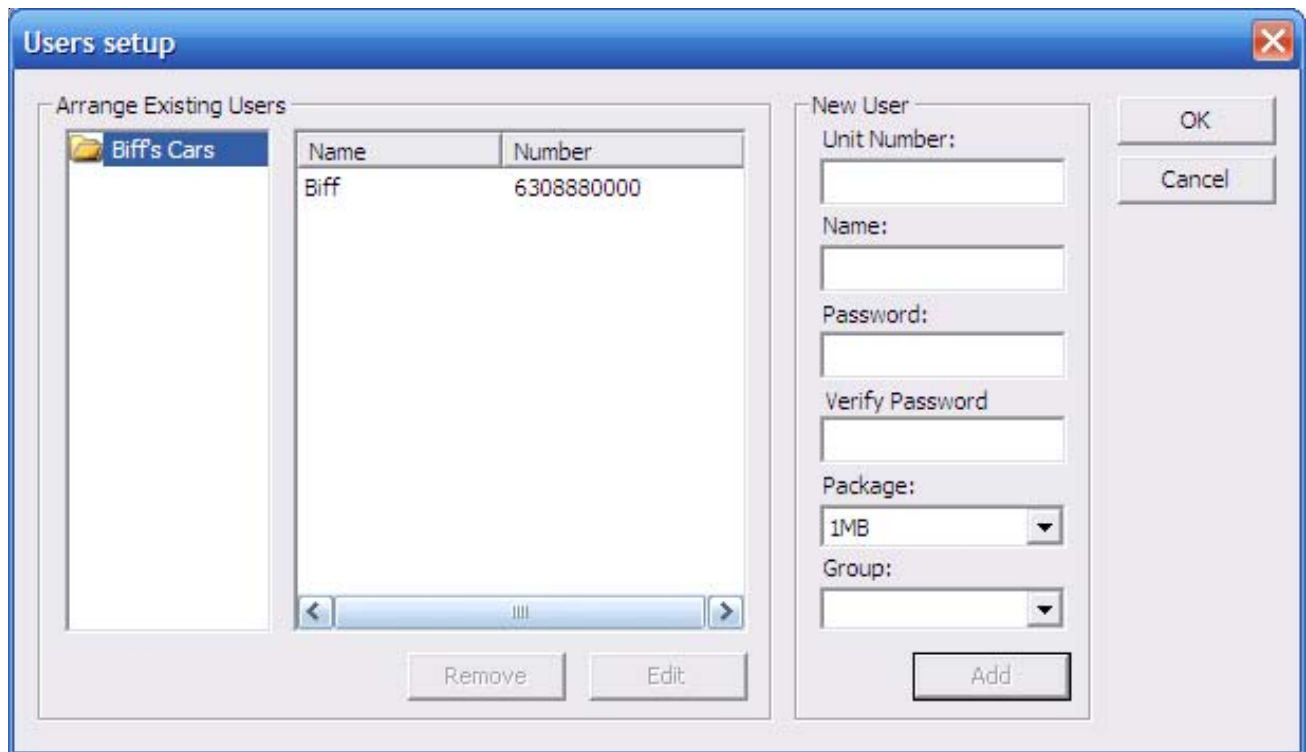


Click on the Setup Users button.

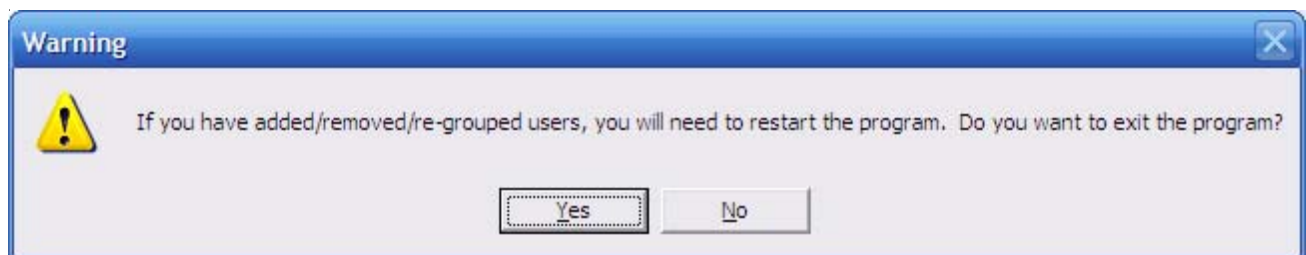
Fill in the fields with the appropriate information. Your Unit Number should have been e-mailed to you. Then Click Add.



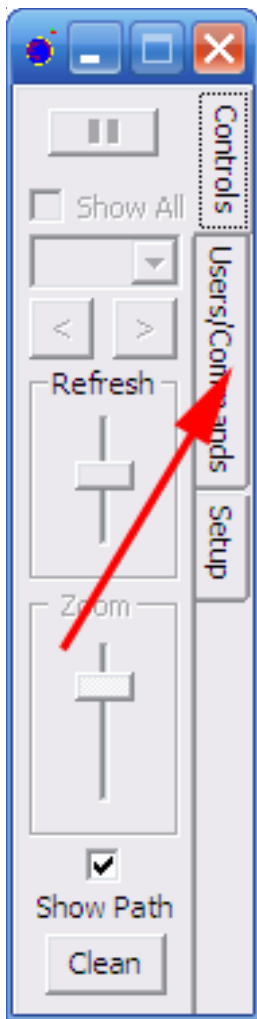
After you click and then click on your Group name, which is Biff's Cars in our example, you should see a screen similar to the one shown below.



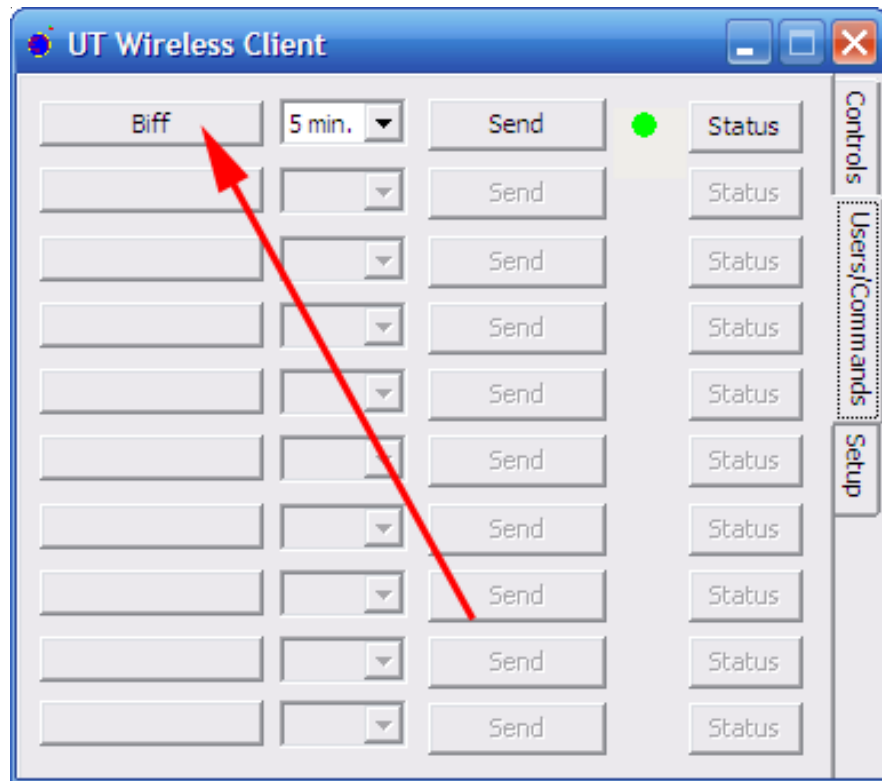
Now you can click Ok. You will see a message shown below telling you that you have to restart the program. Click Yes.



Now go to your Desktop and run the UTWireless program again. The program should open up and look like the figure on the next page.

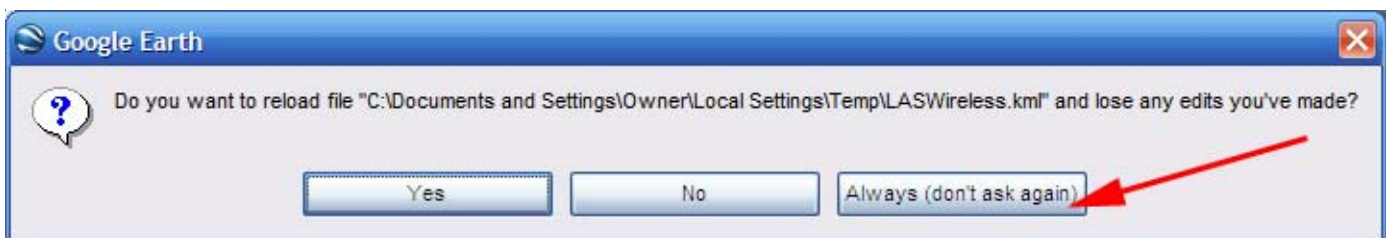


Click on the Users/Commands tab. You should see something like the figure shown below.



Now click on the button with the description of the vehicle. See arrow above. As soon as you click on that button it will stay pressed in and Google Earth will open and zoom into the vehicle's location.

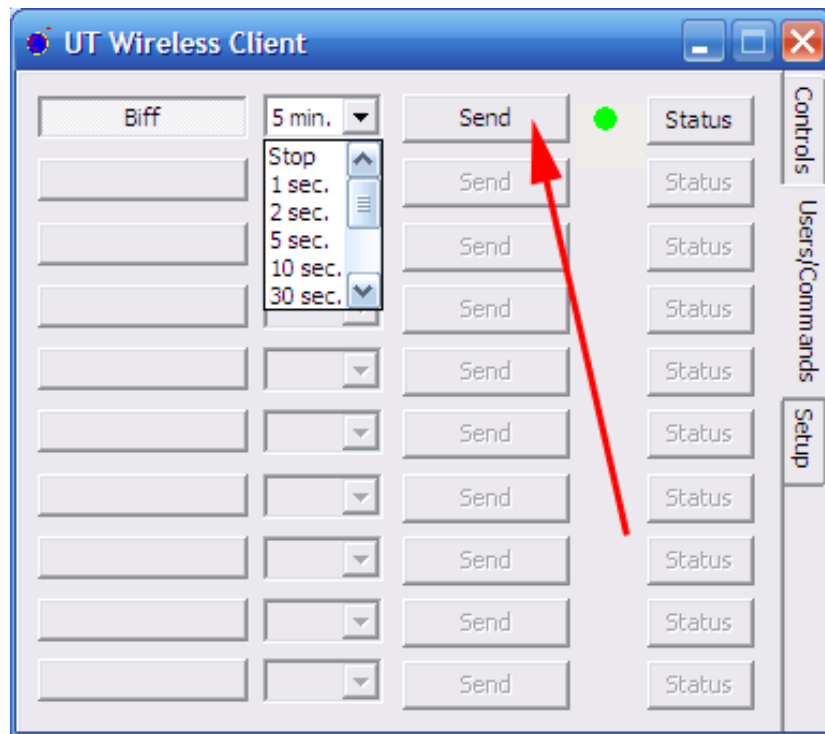
It will not be long before you see the following message:



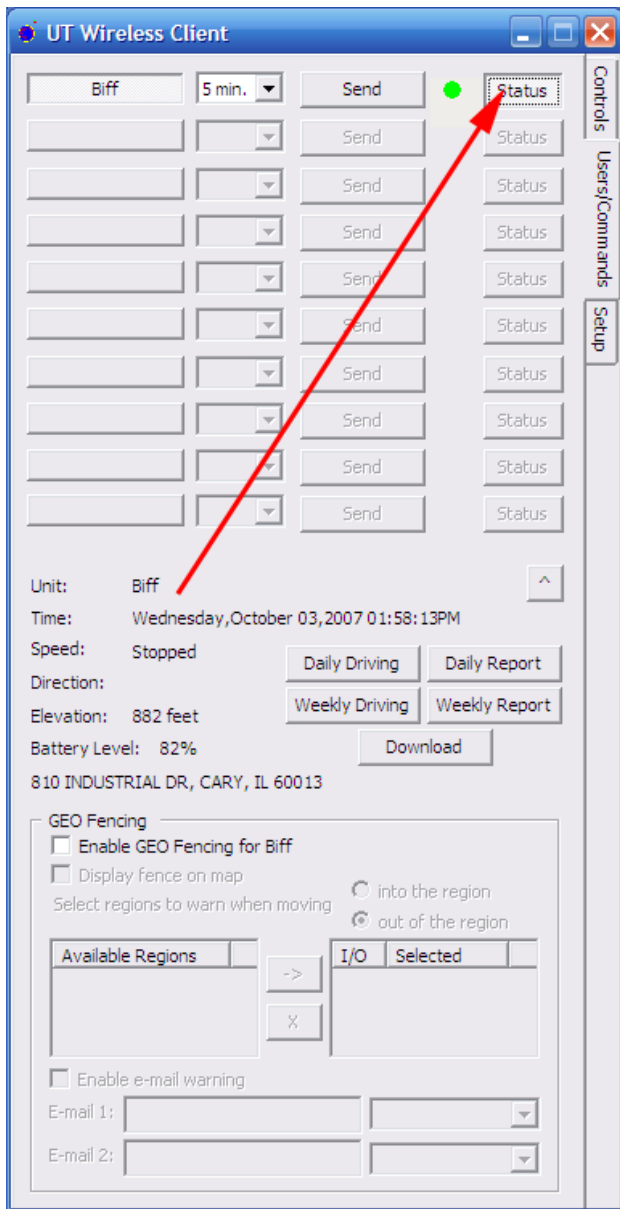
Click Always (don't ask again).

Your 8100 unit was shipped with the default tracking set to 5 minutes. Select the rate that you want your tracking unit to update.

Warning! If you do not see all of the options shown below (1 sec, etc), that means you are not set up on a monthly data plan that is safe to use these options. As an example, you should be set up on an unlimited monthly data plan if you want to do 1 second tracking.



After you have selected tracking frequency, click the Send button. NOTE: Your unit may not respond right away with the updated tracking frequency because it may be in sleep mode. You must wait for the vehicle to be in motion before the update takes place.



Now you can click on the Status button which will give you more information about your vehicle's location.

You will also see some other options such as GEOFencing. If you want to learn more about these other options, download the appropriate guide to learn how to use these functions.